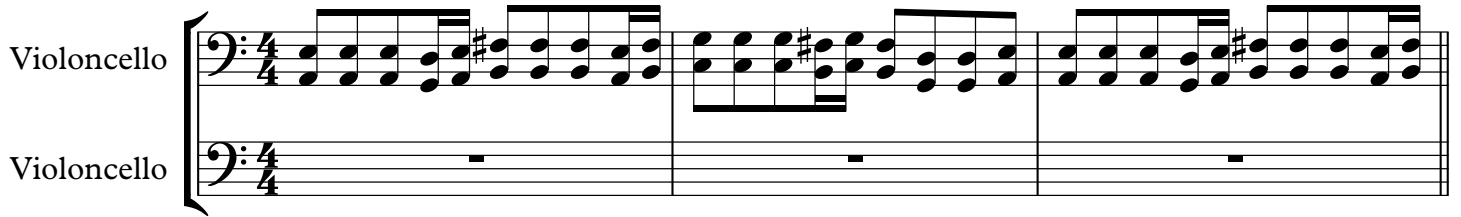


Smooth Criminal

Kyle Tryk

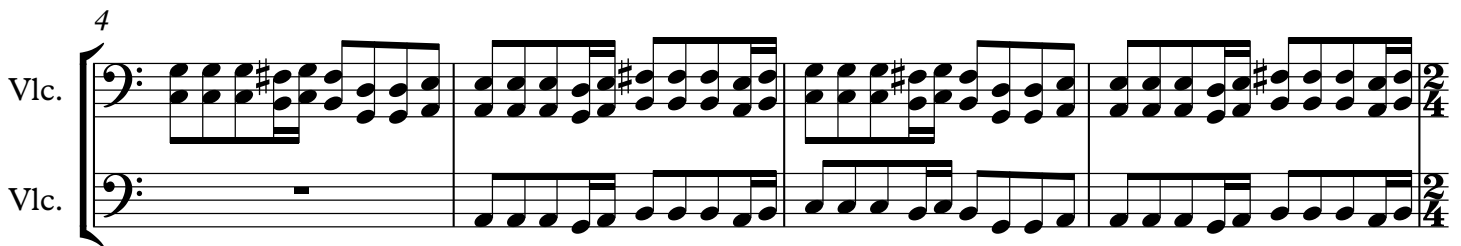
Allegro = 136 ♩ = 136

Violoncello



4

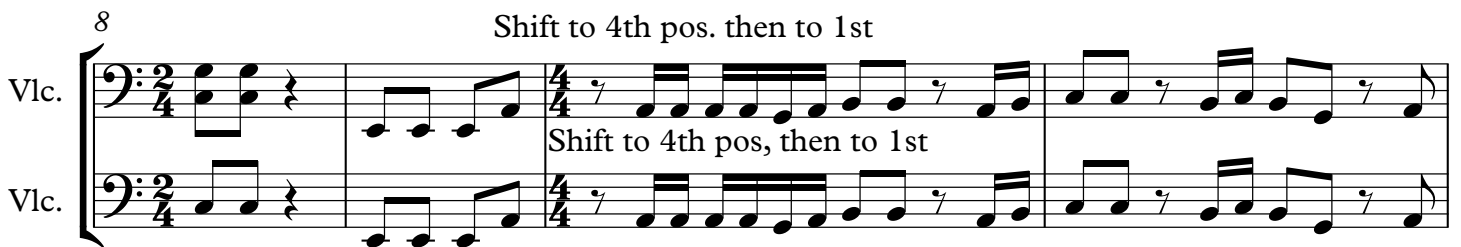
Vlc.



8

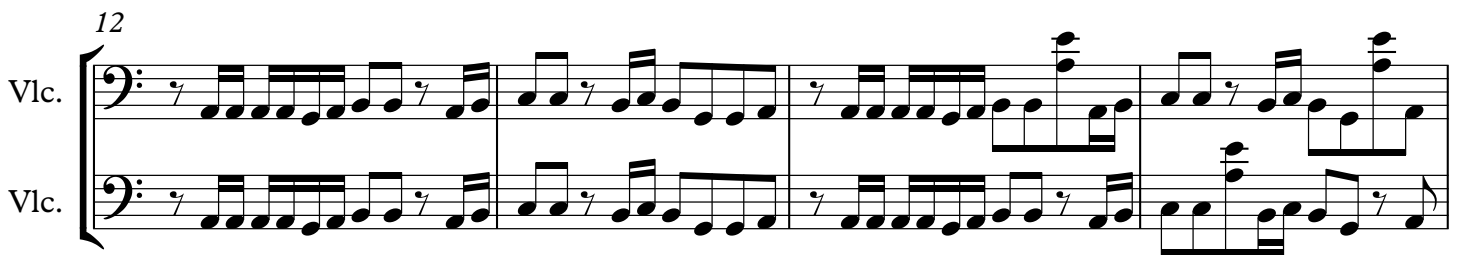
Shift to 4th pos. then to 1st

Vlc.



12

Vlc.






16

Vlc.





19


Vlc.  

Vlc. 

Violin and Viola parts for measures 19-21. The top staff (Violin) is in bass clef and plays a melodic line with eighth notes. The bottom staff (Viola) is in bass clef and plays a rhythmic accompaniment with eighth notes and rests.

22



Vlc.  


Vlc. 

p *f*

Violin and Viola parts for measures 22-24. The top staff (Violin) is in bass clef. The bottom staff (Viola) is in bass clef. Dynamics *p* and *f* are indicated. The Viola part ends with a treble clef and a melodic flourish.


25


Vlc.  

Vlc. 

Violin and Viola parts for measures 25-28. The top staff (Violin) is in bass clef. The bottom staff (Viola) is in treble clef.



29


Vlc.  

Vlc. 

Violin and Viola parts for measures 29-32. The top staff (Violin) is in bass clef. The bottom staff (Viola) is in treble clef.

33

Vlc.  

Vlc. 

Violin and Viola parts for measures 33-35. The top staff (Violin) is in bass clef. The bottom staff (Viola) is in treble clef.

36

Vlc.

Vlc.

39

Vlc.

Vlc.

43

pizz.

Vlc.

Vlc.

47

Vlc.

Vlc.

51

Vlc.

Vlc.

54

Vlc. Vlc.

Detailed description: This system contains measures 54, 55, and 56. The top staff (Violin) begins with a melodic line starting on G4, featuring a flat sign (b) and a slur over the first two measures. The bottom staff (Viola) provides a rhythmic accompaniment of eighth notes. The key signature has one flat (B-flat major or D minor).

57

Vlc. Vlc.

arco

Detailed description: This system contains measures 57, 58, and 59. The top staff (Violin) has a melodic line with slurs and accents. The bottom staff (Viola) has a rhythmic accompaniment with slurs. The word "arco" is written in the middle of the system. The key signature has one flat.

60

Vlc. Vlc.

Detailed description: This system contains measures 60, 61, and 62. The top staff (Violin) continues the melodic line with slurs and accents. The bottom staff (Viola) continues the rhythmic accompaniment. The key signature has one flat.

63

Vlc. Vlc.

Detailed description: This system contains measures 63, 64, and 65. The top staff (Violin) has a melodic line with slurs and accents. The bottom staff (Viola) has a rhythmic accompaniment. The key signature has one flat. The system ends with a 4/4 time signature.

66 arco

Vlc. Vlc.

Detailed description: This system contains measures 66 and 67. The top staff (Violin) starts with a treble clef and a 4/4 time signature, with the word "arco" written above it. The bottom staff (Viola) continues the rhythmic accompaniment. The key signature has one flat.

68

Vlc.

Vlc.

70

Crazy Glissando and Tremolo

Vlc.

Vlc.

73

Vlc.

Vlc.

76

Vlc.

Vlc.

80

Vlc.

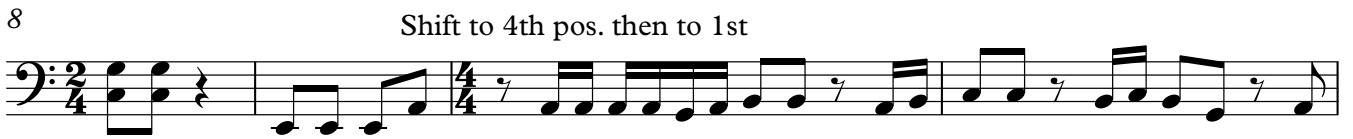
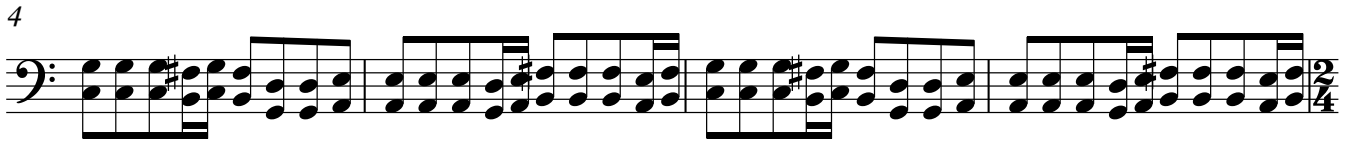
Vlc.

Smooth Criminal

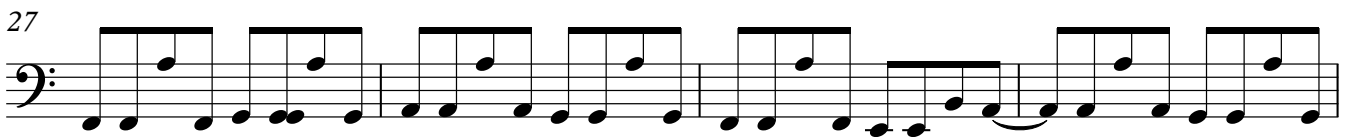
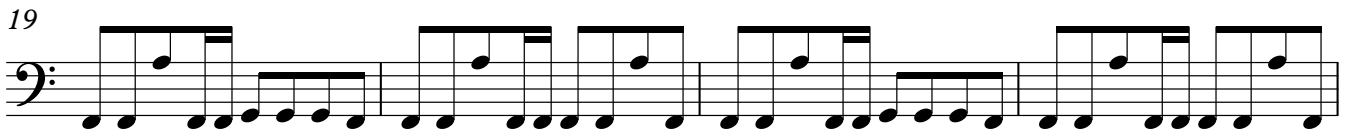
Violoncello

Kyle Tryk

Allegro = 136 ♩ = 136



Shift to 4th pos. then to 1st

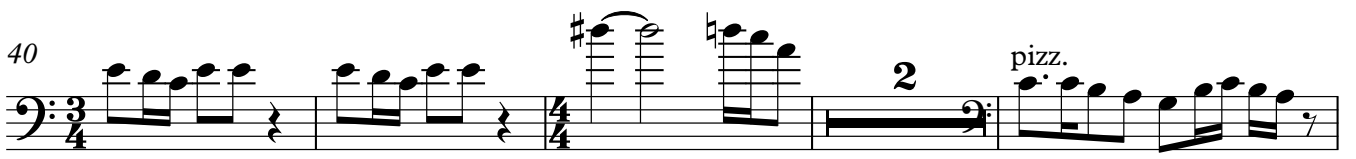


Violoncello

36



40



46



50



54



57



61



64



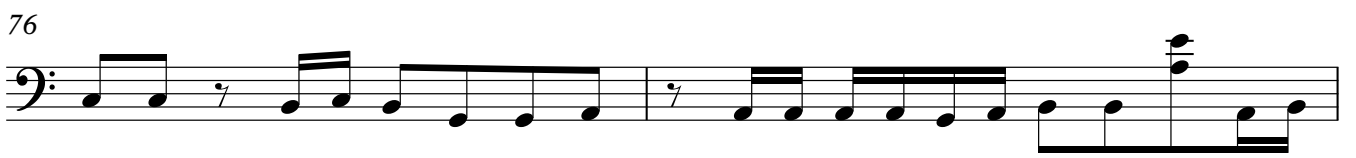
68



73



76



Violoncello

78



Smooth Criminal

Violoncello

Kyle Tryk

Allegro = 136 ♩ = 136

3



7

Shift to 4th pos, then to 1st



11



14



16



19



22



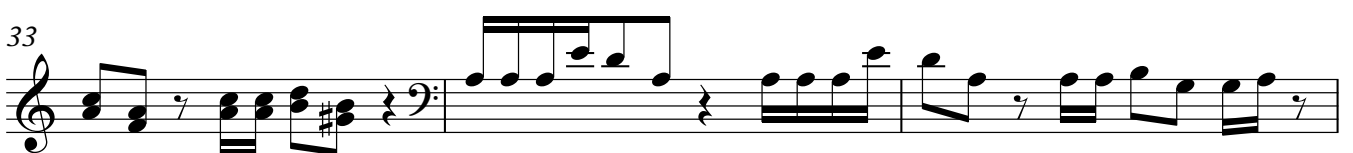
26



30



33



Violoncello

36



39



44



48



51



54



58 arco



61



64



66



68



